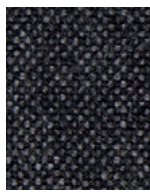


Building upon Maharam's material expertise and interest in bringing a fresh perspective to classic textiles, our wool initiative highlights the environmental, aesthetic, and performance benefits of the natural fiber through extraordinary breadth of color and texture. The series celebrates the tactility and nuance of wool with textures ranging from the lightly pressed hand of Beck and Campana to the subtle dimension of Luce. Two felted wools in collaboration with renowned fashion designer Sander Lak—Gemma and its reversible mélange companion Gemma Multi—explore Lak's acute sense of color with an exceedingly soft hand.

Embracing wool's natural performance attributes and reduced environmental impact as a rapidly renewable material, Maharam wools avoid added chemical finishes and incorporates recycled and post-consumer recycled content wherever possible.

- 5 styles: Beck, Campana, Gemma by Sander Lak, Gemma Multi by Sander Lak, Luce
- 128 featured colors
- Visit maharam.com to view all 283 colors
- Meets all flammability requirements for contract use
- Meets ACT performance guidelines for heavy-duty upholstery
- Supported by Maharam's ISO 14001 certification of over twenty years



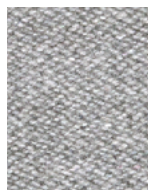
Beck
001 Overshadow



Luce
006 Austere



Campana
002 Lithograph



Luce
004 Sinter



Gemma Multi
130 Chromium Reverse



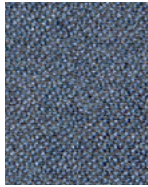
Beck, Luce, Gemma Multi by Sander Lak



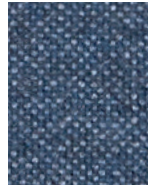
Gemma
041 Chamber



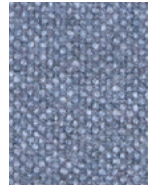
Gemma Multi
120 Memoir Reverse



Campana
009 Interstellar



Beck
010 Letterpress



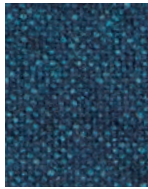
Beck
009 Interlude



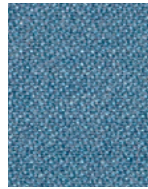
Gemma Multi
028 Tanzanite



Luce
007 Pigment



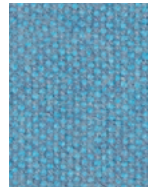
Beck
019 Semblance



Campana
012 Succession



Luce
015 Submerge



Beck
022 Underwater



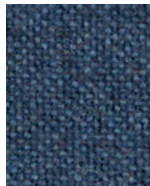
Campana
014 Hemisphere



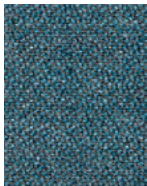
Gemma Multi
036 Heavenly



Campana
015 Troposphere



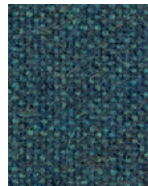
Beck
015 Praxis



Campana
013 Visceral



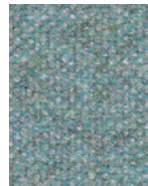
Gemma Multi
127 Sidereal Reverse



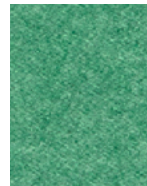
Beck
025 Appalachian



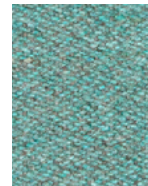
Beck
027 Woodruff



Beck
023 Tetrapod



Gemma Multi
037 Vernal



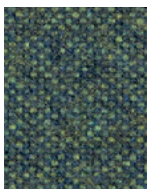
Luce
018 Adriatic



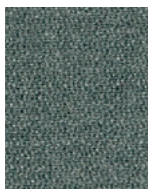
Gemma Multi
138 Cress Reverse



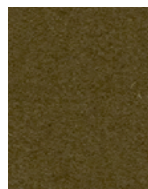
Gemma
050 Caliber



Beck
028 Malachite



Campana
018 Nemorous



Gemma
006 Paddleboat



Luce
022 Agrarian



Gemma
018 Root



Campana
024 Beachgrass



Gemma
005 Gilded



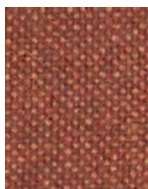
Gemma Multi
141 Shandy Reverse



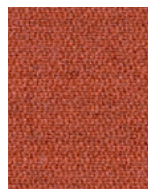
Gemma Multi
143 Percolate Reverse



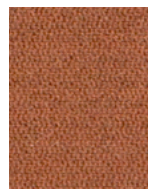
Gemma
013 Ferric



Beck
039 Clayware



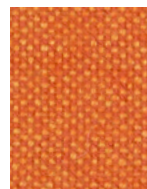
Campana
032 Renaissance



Campana
031 Mojave



Gemma
012 Serape



Beck
037 Candescent



Gemma Multi
049 Rishi



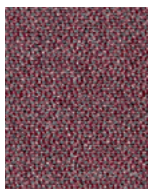
Gemma
019 Mansion



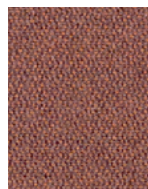
Gemma
007 Stagecoach



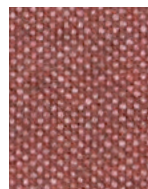
Gemma
008 Waterbuck



Campana
035 Millipede



Campana
034 Outback



Beck
042 Effervescent



Luce
030 Rubescent



Gemma
016 Patio



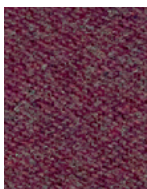
Campana
033 Decoupage



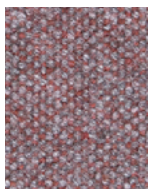
Beck
041 Whimsy



Gemma Multi
121 Roulette Reverse



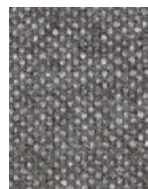
Luce
033 Regent



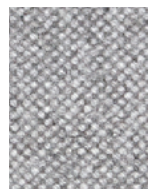
Beck
044 Resplendent



Gemma Multi
044 Motor



Beck
047 Plutonic



Beck
048 Foundry



Gemma
037 Revere



Beck
045 Hollyhock



Gemma
035 Enamored

Beck
Campana
Gemma by Sander Lak
Gemma Multi by Sander Lak
Luce

Beck
Content: 78% Wool, 22% Nylon
Finish, Backing: None, None
Width: 54"

Campana
Content: 85% Wool, 15% Nylon
Finish, Backing: None, None
Width: 59"
Note: Reversible.

Gemma by Sander Lak
Content: 85% Wool, 15% Nylon
Finish, Backing: None, None
Width: 56"

Gemma Multi by Sander Lak
Content: 85% Wool, 15% Nylon
Finish, Backing: None, None
Width: 56"
Note: Reversible.

Luce
Content: 75% Post-Consumer Recycled Wool,
20% Polyester, 5% Nylon
Finish, Backing: None, None
Width: 59"

TYPICAL FOR ALL
Maintenance: S-Clean with mild, water-free
dry cleaning solvent.
Abrasion: 100,000 cycles Martindale.
Note: Abrasion test results exceeding ACT
Performance Guidelines are not an indicator
of product lifespan. Multiple factors
affect fabric durability and appearance
retention.
Flammability: This textile meets all
appropriate flammability requirements
for contract use.
Reduced environmental impact: These textiles
offer reduced environmental impact.

Find complete product information at
maharam.com.

Samples: Call 800.645.3943 or visit
maharam.com

© 2021 Maharam

Offer current as of September 2025

Complete specifications at maharam.com

Davis
2400 College Drive
PO Box 2065
High Point, NC 27261
336.889.2009
davisfurniture.com

DAVIS